

# JVC

4K Memory Card Camera Recorder

## GY-HM170



**Compact 4K Camcorder Combines Quality, Mobility, and Versatility**



# 4K CAM

**HDMI**  
HIGH-DEFINITION MULTIMEDIA INTERFACE

**SD**  
HC

**SD**  
XC

**AVCHD**  
Progressive

**MOV**  
QuickTime™

Shown with optional microphone



## 4K Ultra HD Camcorder for the Pro On-the-Go

Meet GY-HM170, the full-featured 4K Ultra HD camcorder with professional audio connectivity that's small and light enough to take everywhere and capable of the quality you need. Its detachable handle contains two XLR audio inputs, each mic/line switchable with phantom power. And with two SDHC/SDXC slots, you can record hours of 4K/UHD (3840x2160) material or 4:2:2 HD signals at up to 50Mbps. Whether you want to fully customize your settings, or set it to Full Auto and simply concentrate on the subject, count on the compact camcorder that puts professional quality in the palm of your hand.



### 1/2.3-inch 12.4M CMOS Sensor

The GY-HM170 was built to deliver stunning, life-like 4K Ultra HD (3840x2160) video. JVC's 4K CMOS sensor with 12.4M pixels delivers high sensitivity and excellent performance over a wide range of lighting conditions. Details are crisp and accurate throughout the entire image plane.

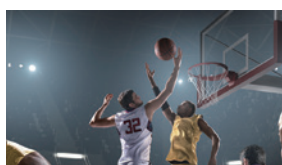


### 12x Optical Zoom and Seamless 24x Dynamic Zoom

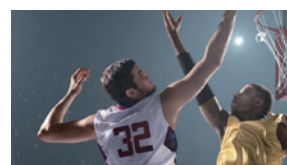
The ultra high quality imagery begins with a precision 12x F1.2–3.5 optical zoom lens (35mm equivalent: 29.6–355mm). When shooting in the HD mode, Dynamic Zoom combines optical zoom and pixel mapping from a 4K image sensor to create seamless and lossless 24x zoom. This allows the camera to have a long zoom range while retaining its compact form factor.



Original Image No Zoom



12x Optical Zoom



24x Dynamic Zoom in HD Zoom

Dynamic Zoom combines Optical Zoom plus Pixel Mapping—focusing on a smaller image area for lossless 24X Zoom



## 4K/Ultra HD (UHD) Recording at 150Mbps and Live Output

Working with 4K has never been easier. Insert an SDHC or SDXC (UHS-I Speed class 3) memory card and record hours of 4K/UHD (3840x2160) material. Recordings are made using the Quicktime (.MOV) file format and are compatible with many popular editing systems. Connect a 4K/UHD monitor with a single HDMI cable, and view the camera's live 4K signal. You can also play back recorded files directly from the camera. A 70Mbps recording mode is also available to record 4K footage on economical Class 10 SDHC/SDXC memory cards.

## 120fps (59.94Hz)/100fps (50Hz) High-Speed Recording for Slow Motion Playback

Also available is high-speed recording\* at up to 120fps (59.94Hz)/100fps (50Hz) for smooth slow motion playback (up to 1/5 slow at 24p mode). It helps create artistic effects and lets you watch replays to examine sporting skills.

\*Available in 1920x1080 resolution only



## Full HD 4:2:2 Recording at 50Mbps

The ability to record H.264 4:2:2 24-60p at 50Mbps makes the GY-HM170 an ideal camera for broadcasting and production houses alike. The color accuracy of 4:2:2 enables the GY-HM170 to deliver exceptional color resolution even when images are in sharp contrast to the background. This is particularly useful when strong colors are in contrast to bright backgrounds, or in green screen usage.

### HD 4:2:2 60p/50p at 50Mbps

## Dual SDHC/SDXC Card Slots for Maximum Versatility

Dual SDHC/SDXC card slots make the GY-HM170 a truly versatile camcorder, offering such benefits as series recording, dual recording, and backup recording modes using reliable and cost-effective media.

- **Series (relay) recording mode:** Continuous recording card by card.
- **Dual (simultaneous) recording mode:** Recording to 2 cards at same format for backup or multi-purpose.
- **Backup recording mode:** While the Rec trigger is used to REC and STOP recording on one card, the other card can act as a continuous backup that overrides the pause function.\* This is a unique mode highly demanded by theatrical and bridal camera crews.

\*During simultaneous backup recording in HD mode, the duplicate file records in the same file format and bit rate as the original.



## More Features for Reliable Shooting

- Histogram Display • Spot Meter Display • Focus Assist
- 2-Position ND Filter (1/4, 1/16) • Built-in Stereo Microphone • 3.5-inch Color LCD Display (920K pixel)
- 0.24-inch Color Viewfinder • Wired Remote Control supported

## Optional Accessory

**BN-VF823**  
Li-ion Battery  
7.2V, 2190mAh



## Manual Control Rings and User Assignable Buttons

Take total control of the scene with dual large rings for zoom and focus, and IRIS dial for smooth shooting. What's more, functions you want can be allocated to 9 buttons and 4 cursor levers, so settings can be changed smoothly during recording, making professional operation really easy.



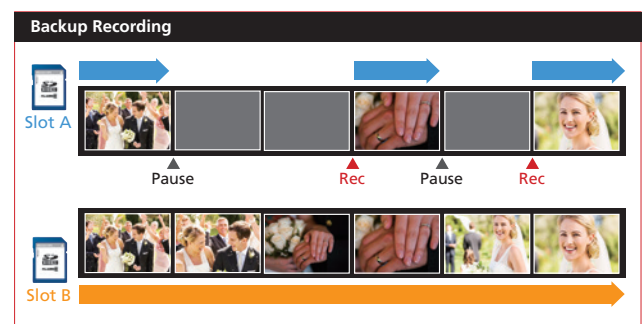
## Heavy-duty Handle Unit with Various Controls

The detachable heavy-duty handle makes the GY-HM170 easy to carry — and also makes it simple to shoot from low angles, thanks to its built-in REC button with lock function, and zoom lever. XLR audio inputs are provided for the attachment of a professional microphone or for LINE input, complete with Phantom power supply capability.



## Fully Customizable Settings and Full Auto Simplicity

For more advanced visual expressions, detailed image settings such as gamma and color shade can be customized. All of the customized settings are stored in the camera unit or SD card, and can be called up whenever necessary. If speed is your maximum concern, you can always go with Full Auto operation or engage Auto partially for certain functions. Reliable shooting is assured even in Auto mode.



Shown with optional microphone

## Specifications

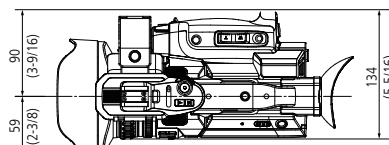
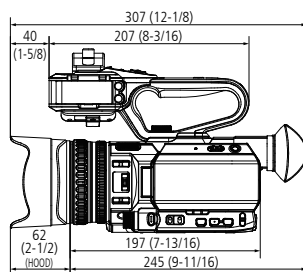
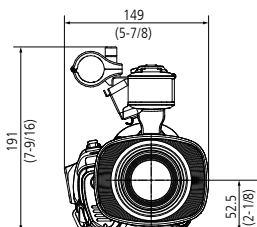
GENERAL	
Power	DC 12V (AC adaptor), DC 7.2V (battery)
Power consumption	Approx. 8.1W (with VF in 4K REC mode, default setting)
Weight	Approx. 1.5kg (including battery)
Dimensions	149 (W) x 191 (H) x 307 (D) mm
Operation temperature	0°C to 40°C
Storage temperature	-20°C to 50°C
Operating humidity	30% to 80%
Storage humidity	Under 85%
CAMERA	
Image sensor	1/2.3-inch back-side illuminated CMOS, total 12.4M pixels
Synchronizing	Internal synchronization
Stabilizer	Optical image stabilizer
Shutter speed	U model: 1/6 — 1/10000, E/EC model: 1/4 — 1/10000
Lens	35mm equivalent: 29.6mm to 355mm
Filter diameter	62mm
Gain	0, 3, 6, 9, 12, 15, 18, 21, 24 dB, LoLux (30, 36 dB), AGC
ND filter	None, 1/4, 1/16
LCD display	3.5-inch 920 k pixels, 16:9
Viewfinder	0.24-inch 1.56 M pixel, 16:9
VIDEO/AUDIO RECORDING	
Recording media	2x SDHC/SDXC memory card (4K (150Mbps): UHS-1 U3 4K (70Mbps), HD: 50Mbps Class 10, HD: 35Mbps Class 6, AVCHD/SD Class 4), High-Speed: UHS-1 U3
Video recording	Video codec: MPEG-4 AVC/H.264 (4K/HD/SD/Proxy), AVCHD (HD/SD) File format: MOV (H.264), MTS (AVCHD)
Audio recording	LPCM 2ch, 48kHz/16-bit (4K/HD/SD MOV), AC3 2ch (AVCHD), µ-law 2ch (Proxy)
INTERFACES	
Video output	AV output (3.5mm mini jack x 1), HDMI output x 1
Audio input	XLR x2 (MIC, +48V/LINE), 3.5mm mini jack x 1
Audio output	AV output (3.5mm mini jack x 1)
Headphone	3.5mm mini jack x 1
Remote	2.5mm mini jack x 1
USB	DEVICE x 1 (mass storage)
PROVIDED ACCESSORIES	
Handle unit, battery (BN-VF823) x 1, AC adapter x 1	

## Recording Formats

System	Format	Resolution	Frame rate		Bit rate	Audio	Rec Time on 64GB SD Card	
4K	QuickTime (MPEG-4, AVC/H.264)	3840×2160	29.97p/25p/23.98p		150Mbps/70Mbps (YUV 4:2:2/Normal)	LPCM 2ch 48kHz/16bit	50 min./105 min.	
HD		1920×1080	59.94p/59.94i/50p/50i/29.97p/25p/23.98p		50Mbps (YUV4:2:2/XHQ)		145 min.	
			59.94p/59.94i/50p/50i/29.97p/25p/23.98p		35Mbps (UHQ)		200 min.	
		1280×720	59.94p/50p		35Mbps (UHQ)		270 min.	
SD	AVCHD	1920×1080	59.94p/50p		28Mbps (HQ)	Dolby Digital 2ch 48kHz/16bit 256kbps	312 min./400 min.	
			59.94i/50i		24Mbps (HQ), 18Mbps (SP)			
	QuickTime	720×480 (U model)	59.94i		8Mbps (HQ)	LPCM 2ch 48kHz/16bit	760 min.	
	AVCHD					Dolby Digital 2ch 48kHz/16bit 256kbps	842 min.	
WEB (Proxy)	QuickTime (MPEG-4, AVC/H.264)	720×576 (E/EC model)	50i		8Mbps (HQ)	LPCM 2ch 48kHz/16bit	760 min.	
						Dolby Digital 2ch 48kHz/16bit 256kbps	842 min.	
	AVCHD	960×540	29.97p/25p/23.98p		3Mbps (HQ)	μ-law 2ch 16kHz	2160 min.	
		720×480	59.94i		8Mbps	LPCM 2ch 48kHz/16bit	760 min.	
720×576		50i						
High-Speed	QuickTime (MPEG-4, AVC/H.264)	1920×1080	480×270	29.97p/25p/23.98p		1.2Mbps (LP)	μ-law 2ch 16kHz	4720 min.
			1440×1080	59.94i/50i		9Mbps (LP), 5Mbps (EP)	Dolby Digital 2ch 48kHz/16bit 256kbps	760 min./1344 min.
			720×480	59.94i		8Mbps		760 min.
			720×576	50i				
High-Speed	QuickTime (MPEG-4, AVC/H.264)	1920×1080	120fps	59.94p/29.97p/23.98p		50Mbps (XHQ), 35Mbps (UHQ)	—	(Differs by setting)
			100fps	50p/25p				
			60fps	29.97p/23.98p				
			50fps	25p				

## Dimensions

Unit: mm (inch)



Product and company names mentioned here are trademarks or registered trademarks of their respective owners. "AVCHD Progressive" and "AVCHD Progressive" logo are trademarks of Panasonic Corporation and Sony Corporation. HDMI, the HDMI logo and High-Definition Multimedia Interface are trademarks or registered trademarks of HDMI Licensing LLC. Dolby is a trademark of Dolby Laboratories. The SD, SDHC and SDXC are trademarks of the SD Card Association.

*Simulated pictures.  
The values for weight and dimensions are approximate.  
E.&O.E. Design and specifications subject to change without notice.  
Copyright © 2017, JVCKENWOOD Corporation. All Rights Reserved.*

# JVCKENWOOD

DISTRIBUITO IN ITALIA DA:  
JVCKENWOOD Italia S.p.A.  
Via Sirtori 7/9 - 20129 Milano (MI)  
Tel: 02-204821 - Fax: 02-29516281  
E-mail: info@jvcpro.it

Per maggiori informazioni: [www.it.jvc.com](http://www.it.jvc.com)

Facebook JVCKENWOOD  
 YouTube KENWOODCOMMUNITY  
 LinkedIn JVCKENWOOD ITALIA S.p.A.